

“Rates people obtain permanent housing by sector”

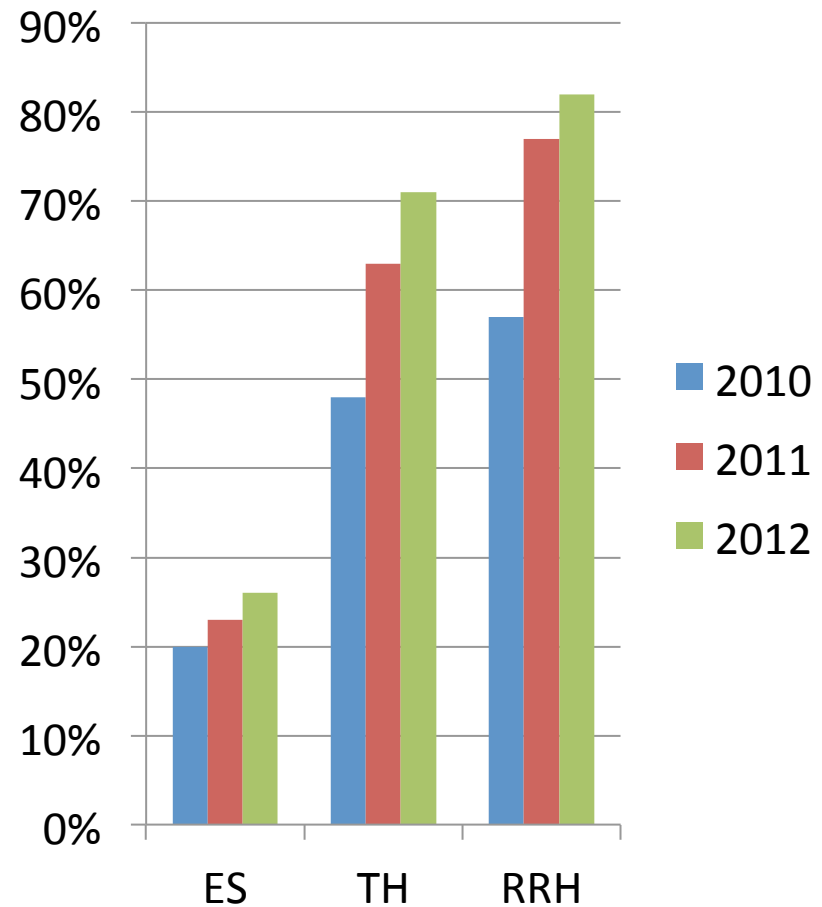
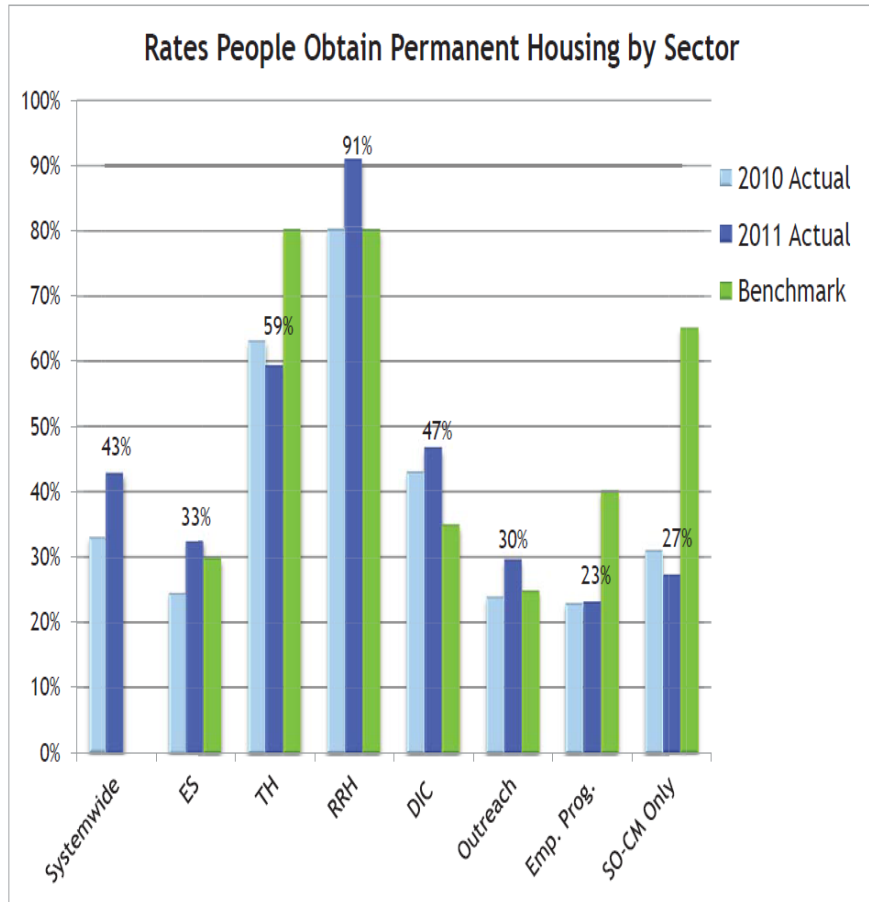
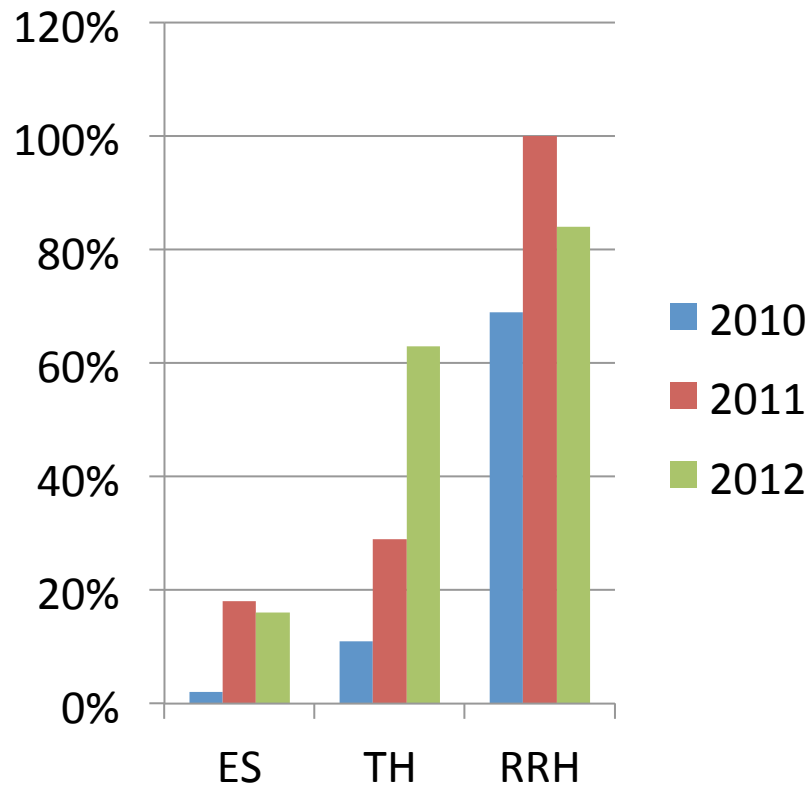


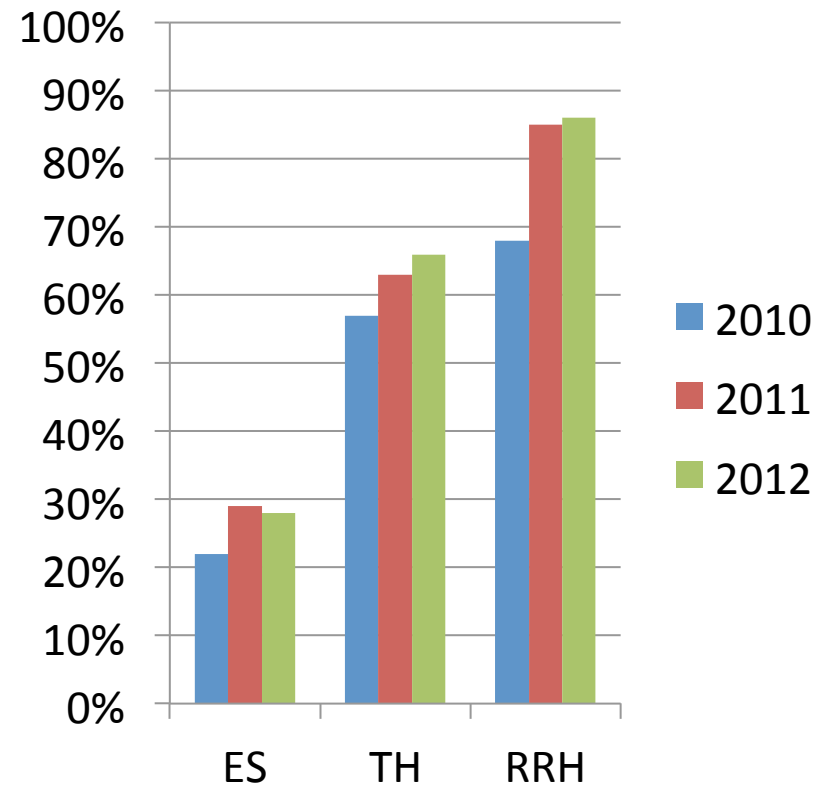
Figure 1 Percentage labels indicate 2011 actuals. Source for Systemwide data: 2011 APR run systemwide without HPRP. Sources for Sector data: InHOUSE Outcomes Report 2/3/12, run for each sector, 2011 Alameda County.

“Rates people obtain permanent housing by sector and county”

Snohomish County

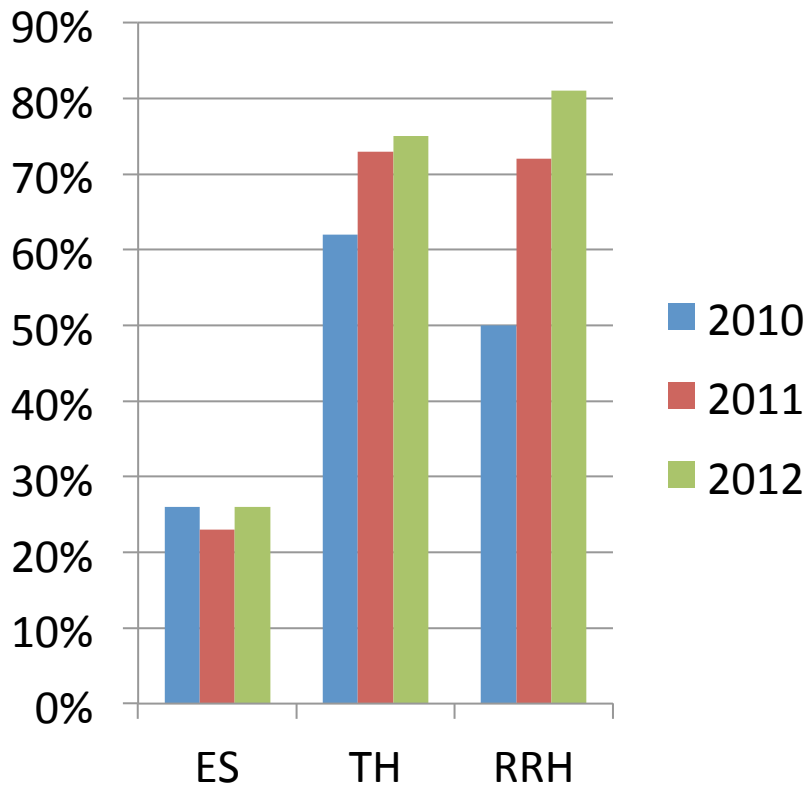


Pierce County

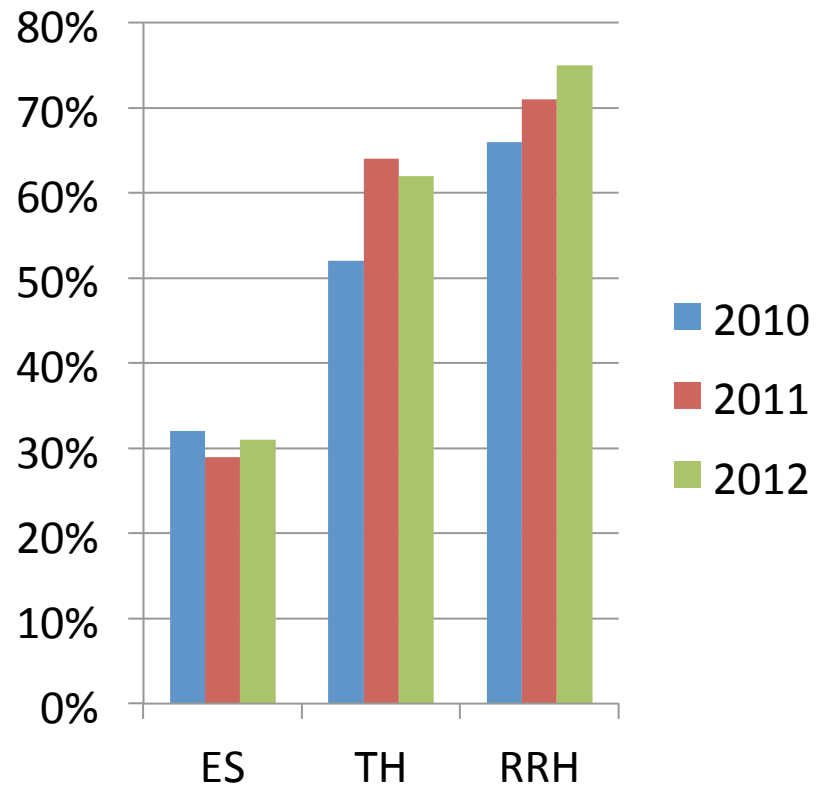


“Rates people obtain permanent housing by sector and county”

King County



Balance of State



Types of exits to permanent housing system wide

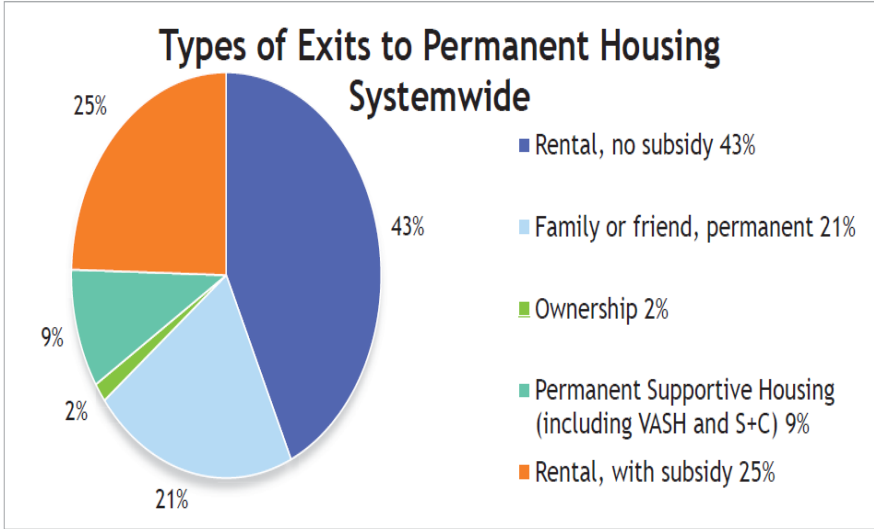
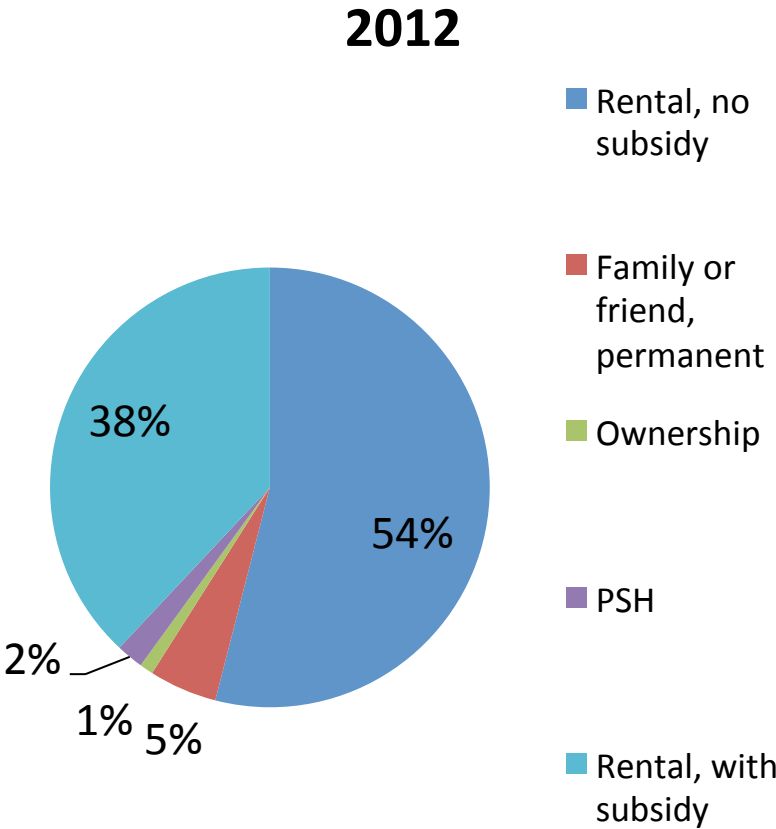


Figure 8 Source: InHOUSE Report APR v4.06.087 2/6/12 (run system wide without HPRP), 2011 Alameda County.



Return to Homelessness

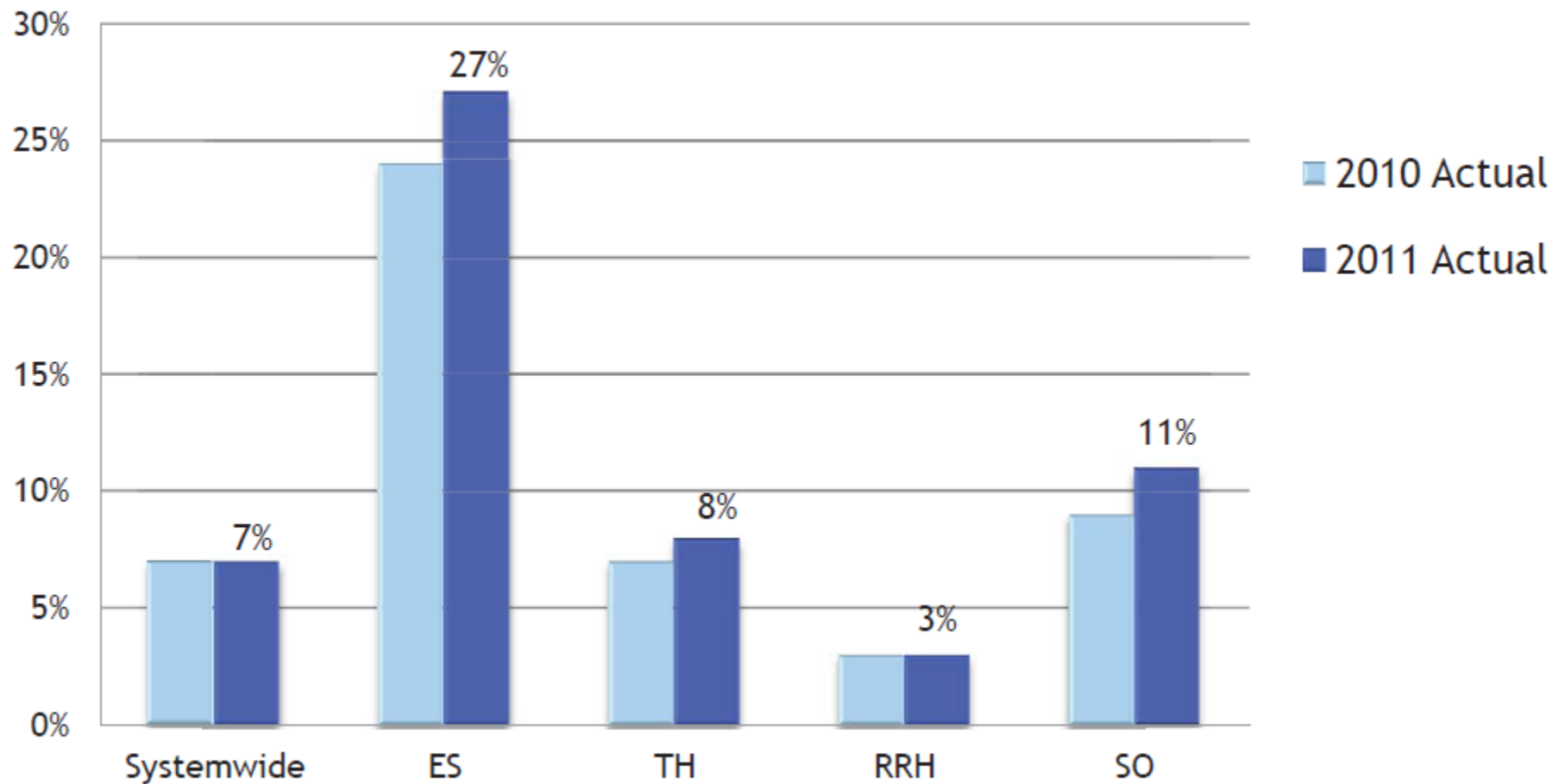
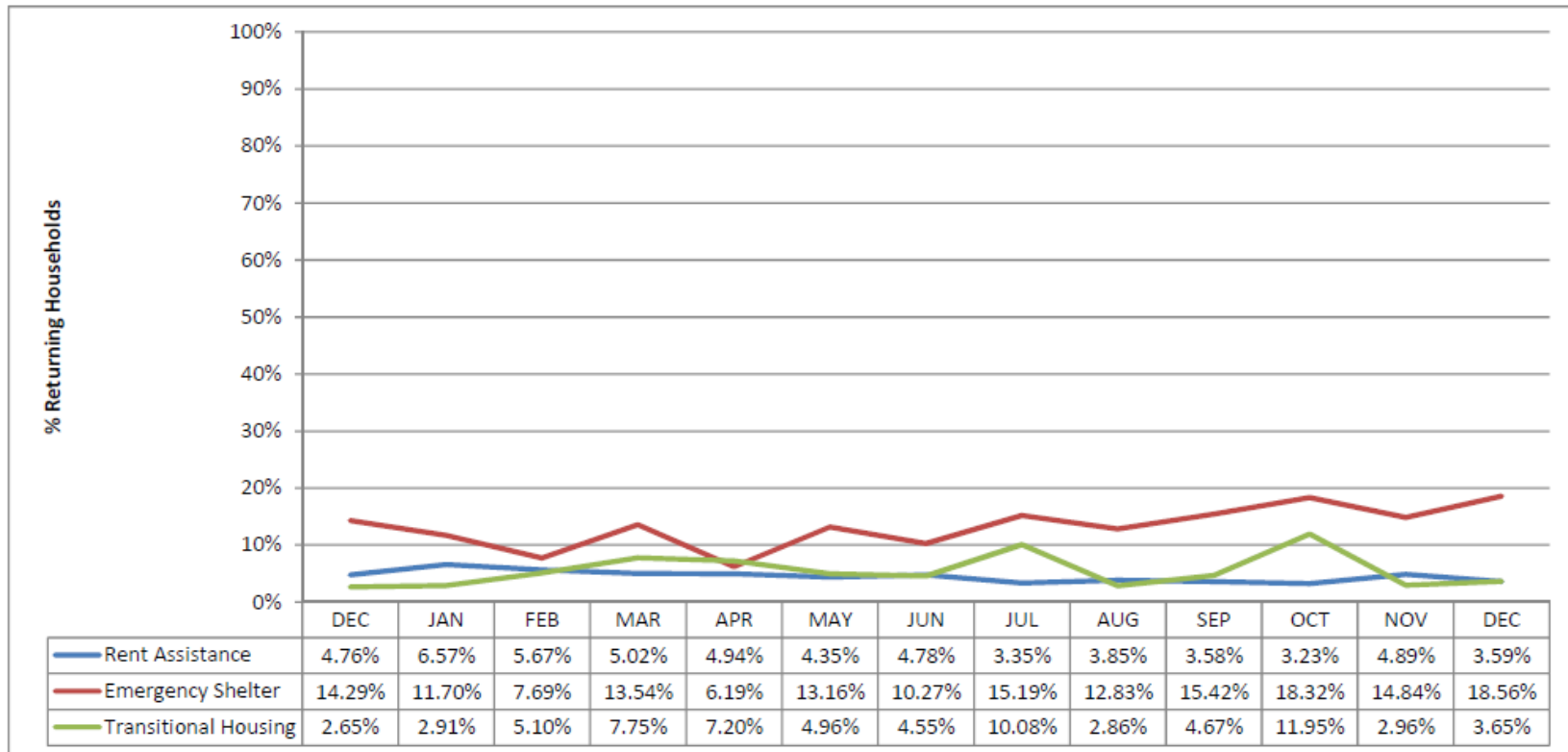


Figure 9 Source: InHOUSE Report "Returns to Homelessness v 12.02.03", run by systemwide with HPRP and by sector for each quarterly increment, 2011 Alameda County.

Households Returning to Homelessness



Analysis Hints for "Households Returning to Homelessness":

- Lines on this graph should be trending downward.
- Upward or widely varying lines indicate:
 - Increasing numbers of households that were exited to permanent housing from the homeless system over a year ago and have since returned to the homeless system
 - Low numbers of households being exited from programs in the year prior to the dashboard month

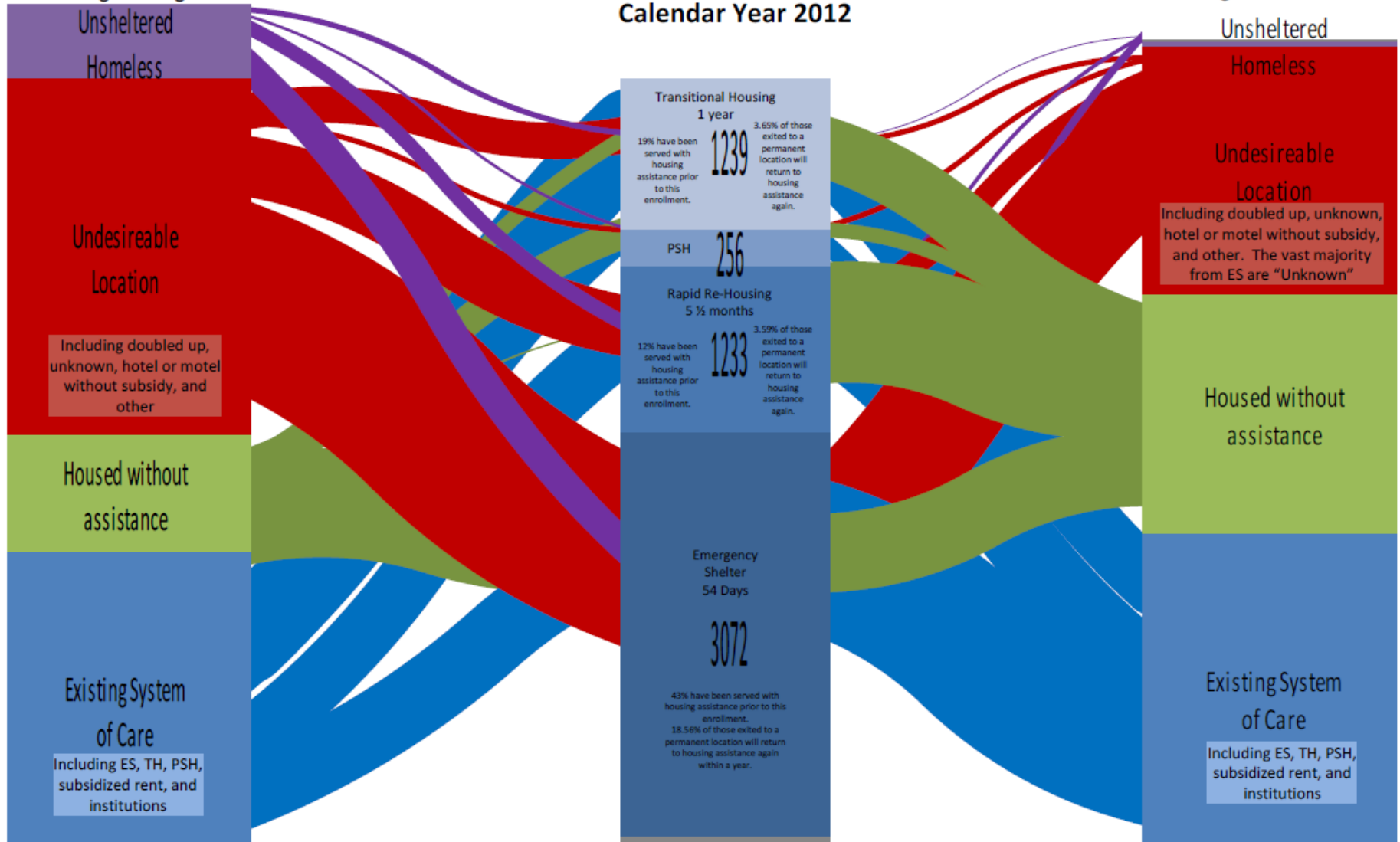
Exits to Streets or Shelter	ES	Emp. Prog.	SO-CM only
2011 Actual	29%	12%	14%
2010 Actual	17%	13%	2%
2009 Actual	10%	18%	1%
Benchmark	less than 30%	less than 40%	less than 20%

Figure 16 Source: InHOUSE Report "Outcomes" 2/3/2012 (run by sector), 2011 Alameda County.

Residence on the night prior to receiving housing assistance

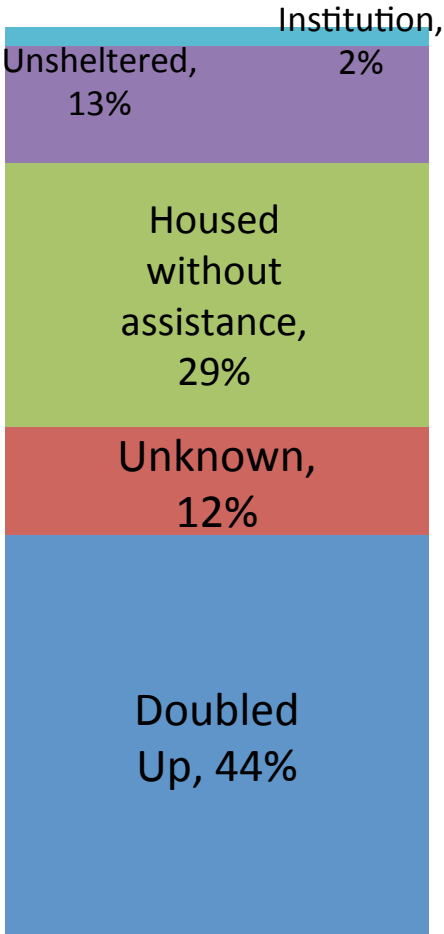
Homeless Families Receiving Housing Assistance Calendar Year 2012

Residence upon completion of housing assistance

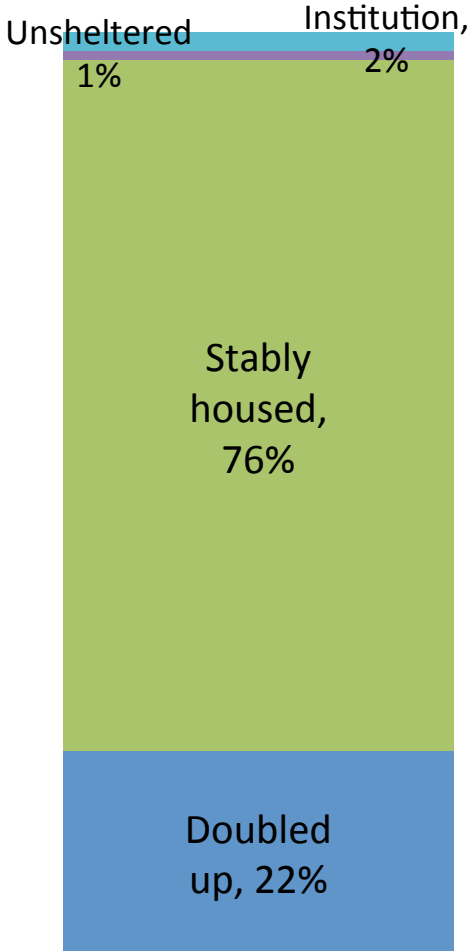


Families moving through the homeless system

At Entry



At Exit



Excludes unknown destinations and households coming from and returning to the homeless system

Program Type	Average Length of Stay (LOS) in days for Exited Persons		Average LOS per Exit to Permanent Housing		% of those exiting to PH who do so within 60 days	
	2010	2011	2010	2011	2010	2011
Shelter	60	56	84	79	59%	54%
Rapid Re-Housing	124	138	129	137		
Transitional Housing	346	288	383	351		

Figure 17 Source: InHOUSE Report "Length of Stay - Averages v 12.03.15" (run for ES, RRH, and TH sectors) and ES Sector "Outcomes" Report 2/3/2012, 2011 Alameda County.

