

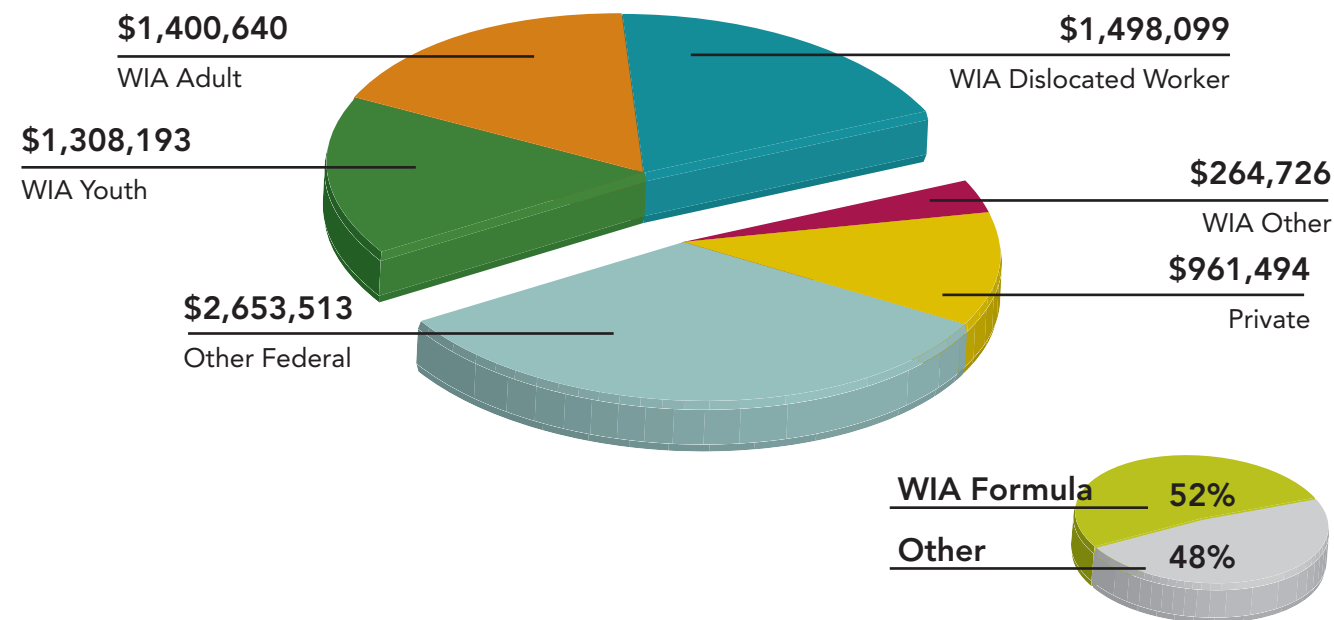
BOARD MEMBERS

51% of the local Board is comprised of representatives of the local business community. Also represented are labor, education, community based organizations, economic development agencies, State government agencies and other organizations as determined appropriate by the County Executive and the Council.

| | |
|-------------------------------|---|
| <i>Bill Reed</i> | <i>Bill Reed Consulting</i> |
| <i>Blakely Tsurusaki</i> | <i>Washington Alliance for Better Schools</i> |
| <i>Bob Sampson</i> | <i>EvergreenHealth</i> |
| <i>Brian Bookey</i> | <i>National Food Corporation</i> |
| <i>Carlos Veliz</i> | <i>The Lighthouse for the Blind</i> |
| <i>Cathy Feole</i> | <i>Master Builders Careers Connection</i> |
| <i>Charles Elder</i> | <i>Damar Aerosystems</i> |
| <i>Cheryl Telford</i> | <i>Sno-Isle Libraries</i> |
| <i>Darrell Chapman</i> | <i>International Brotherhood of Electrical Workers Local Union 191</i> |
| <i>Dave Rudy</i> | <i>Sno-Isle Tech Center</i> |
| <i>David McCreia</i> | <i>Infoys Limited</i> |
| <i>Dennis Smith</i> | <i>United Way Snohomish County</i> |
| <i>Dr. Jean Hernandez</i> | <i>Edmonds Community College</i> |
| <i>Dr. Kris McDuffy</i> | <i>Arlington School District</i> |
| <i>Ed Triezenberg</i> | <i>Snohomish County Carpenters</i> |
| <i>Fred Worthen</i> | <i>Community Transit</i> |
| <i>Gaye Barrett</i> | <i>Quantum Management Services</i> |
| <i>Grace Holland</i> | <i>International Association of Machinists and Aerospace Workers, Dist. 751 (IAM)</i> |
| <i>Greta Kaas-Lent</i> | <i>Employment Security Department</i> |
| <i>James O'Brien</i> | <i>Department of Vocational Rehabilitation</i> |
| <i>Jared Kink</i> | <i>Everett Education Association</i> |
| <i>Jeffry Tomson</i> | <i>Machinists Incorporated</i> |
| <i>Julie Lord</i> | <i>Pioneer Human Services</i> |
| <i>Katrina Ondracek</i> | <i>United Way of Snohomish County</i> |
| <i>Kelli Wilson</i> | <i>Whidbey Island Bank</i> |
| <i>Ken Stark</i> | <i>Snohomish County</i> |
| <i>Kendra Trachta</i> | <i>Sno-Isle Libraries</i> |
| <i>Kevin Ruoff</i> | <i>Fred Meyer</i> |
| <i>Lanie McMullin</i> | <i>City of Everett</i> |
| <i>Mark Clark</i> | <i>IAM, Dist. 751</i> |
| <i>Mary Jane Vujovic</i> | <i>Snohomish County Human Services</i> |
| <i>Mary Kaye Bredeson</i> | <i>Center of Excellence</i> |
| <i>Ricardo Sanchez</i> | <i>SeaMar Comm. Health Centers</i> |
| <i>Ryan Davis</i> | <i>Everett Community College</i> |
| <i>Stacie Byars</i> | <i>CMC Biologics</i> |
| <i>Sue Putnam</i> | <i>TERRA Staffing Group</i> |
| <i>Teresa Blanchett</i> | <i>Department of Social and Health Services</i> |
| <i>Tiffany Lock-Osterberg</i> | <i>Union Bank</i> |
| <i>Tim Julius</i> | <i>Tulalip Resort</i> |
| <i>Troy McClelland</i> | <i>Economic Alliance Snohomish County</i> |
| <i>Van Kuno</i> | <i>Refugee & Immigrant Services Northwest</i> |

FINANCIAL INFORMATION

Workforce Snohomish revenue comes from federal Workforce Investment Act (WIA) formula funds and competitive grant funds. Federal WIA funds fluctuate based on federal allocations, local need, and economic conditions. Competitive grant funds are sought to fund programs that support and align with Workforce Snohomish's mission and vision.



PARTNERS

American Association of Retired Persons (AARP), Aerospace Futures Alliance, Aerospace Joint Apprenticeships Committee (AJAC), Arlington Public School, Building Changes, Business Government Community Connections, Cascadia College, Catholic Community Services of Western Washington, Center of Excellence for Aerospace & Advance Materials Manufacturing, Central Washington University, City of Everett, Cocoon House, Darrington School District, Department of Social and Health Services, Division of Vocational Rehabilitation, Economic Alliance Snohomish Council, Edmonds Community College, Edmonds School District, Employment Security Department, Everett Community College, Everett Public Schools, Governor's Committee on Disability and Employment, Granite Falls School District, Housing Consortium of Everett & Snohomish County, Housing Hope, Index School District, Institute of Flight, Lake Stevens School District, Lake Washington Institute of Technology, Lakewood School District, Marysville School District, Monroe School District, Mukilteo School District, Noise Without Sound, Northshore School District, Northwest Workforce Council, Pacific Associates, Pioneer Human Services, Refugee & Immigrant Services Northwest, ResCare Workforce Services, Seattle Community College, Seattle King County Workforce Development Council, Service Employees International Union Healthcare Northwest Training Partnership, Snohomish County Veteran's Center, Snohomish County, Snohomish School District, Snohomish Science, Technology, Engineering and Mathematics (STEM) Network, Sno-Isle Libraries, Sno-Isle Tech Skills Center, Society of St. Vincent de Paul, Stanwood-Camano School District, Sultan School District, Team Soapbox, TRAC Associates, University of Washington Bothell, Volunteers of America Western Washington, Washington Laborer-Employers Cooperation & Education Team (WALECET), Washington Employment Security Department, Washington State Service Corps, Washington State University, Western Washington University, Workforce Development Council of Seattle-King County, Young Women's Christian Association (YWCA)

FUNDERS

Bank of America, Building Changes, Cascade Foundation, Corporation for National and Community Service, Department of Labor, Edmonds Community College, Washington State Employment Security Department, Everett Community College, Gates Foundation, Jobs for the Future, Medina Foundation, Skillup, United States Department of Health and Human Services, United Way of Snohomish County, Governor's Committee on Disability and Employment, Veteran's Employment and Training Services

**Workforce
Snohomish**



808 134th St. SW
Suite 105,
Everett WA 98204
Tel: (425)921-3423



workforcesnohomish.org

Workforce Snohomish is an equal opportunity employer and provider of employment and training services. Auxiliary aids and services are available upon request to persons of disability. WA Relay 711

BUILDING A GLOBALLY COMPETITIVE WORKFORCE

ANNUAL REPORT 2014-2015

**Workforce
Snohomish**



LETTER FROM THE PRESIDENT

As the new CEO of Workforce Snohomish this year, I continue to be inspired by what we accomplish as an organization by linking employers and job seekers together. Snohomish County is currently the fastest growing county in the state and our collaborative partnerships in government, education, organized labor, community-based organizations, and employers continue to grow. It is critical that we work together on improving our local region's growing workforce system and meet the needs of both the job seekers and employers.



State Route 530 mudslide. We served our young adults as they ventured into their My First Job experiences. We also started two new successful programs that navigate homeless individuals and families into sustainable jobs and housing; the Homeless Veteran's Reintegration Program (HVRP) and the Bridges to Employment.

We continue to champion our vision, mission, and strategic goals in collaboration with our strong Board of Directors and growing partnerships with community leaders. As the Workforce Investment Act (WIA) transitions into the new Workforce Innovation and Opportunity Act (WIOA) legislation, we plan to continue working with our community partners and employers to ensure that our growing local region's workforce needs in Snohomish County are being met.

This annual report will provide you with details on how federal and private funding was locally invested in the 2014-2015 program year to benefit business, industry and those seeking employment.

Thank you to all who support Workforce Snohomish and our for-profit company, Infralign, an innovative organization established to create sustainable funding for our workforce community. Together we will continue to build a globally competitive workforce!

**Erin Monroe,
President/CEO**

In the 2014-2015 program year, Workforce Snohomish and partners supported thousands of people entering or returning to the workforce, and played a key role in keeping our unemployment rate below 5%. Our WorkSource Everett location alone serves over 3,000 people each month through our Veterans and families' (SERVE) Center, Youth Center, Resource Room and Labor Exchange, and continues to be the busiest one-stop in the state.

During the year, we continued to employ 89 individuals in need to help rebuild the OSO community after the

WHAT WE DO

Workforce Snohomish invests government and private funding to continuously increase the global competitiveness and prosperity of Snohomish County.

We partner with business, labor, educational, community-based, and service-provider organizations to promote the economic well-being of our entire community.

OUR INVESTMENTS

Provide Snohomish County businesses with a highly trained workforce



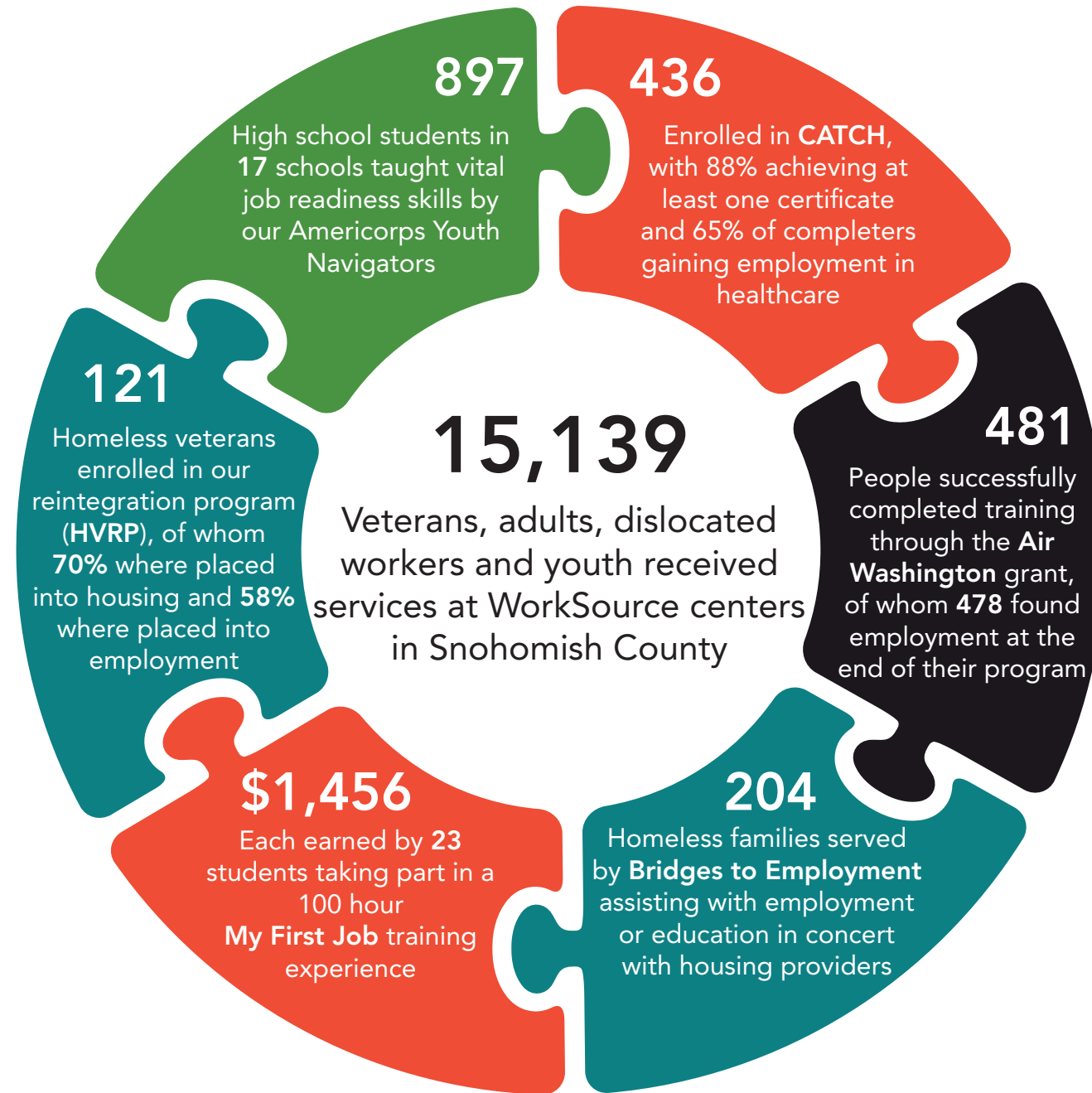
Support programs that assist underserved populations in Snohomish County



Provide essential data to coordinate County economic development initiatives



PROGRAM HIGHLIGHTS



RAPID RESPONSE

Our Rapid Response team works with Snohomish County employers and employee representatives to quickly maximize available public and private resources and to minimize the disruptions to companies, affected workers, and communities that are associated with job loss. Rapid Response can provide customized services on-site at an affected company, accommodate any work schedules, and assist companies and workers through the painful transitions associated with job loss. Services provided include career guidance, re-training, job fairs and customized hiring events.

- 202** Employees served
- 13** Events delivered
- 6** Businesses assisted

CATCH SUCCESS!

Creating Access to Careers in Healthcare

Our Professional Services Division develops initiatives that serve specific sectors or individuals who may not otherwise succeed in the main system of services. One such initiative is CATCH, a federally funded healthcare training grant that supports programs at Everett and Edmonds Community Colleges. The programs train diverse low-income populations in entry level healthcare professions. Participants earn "stackable" certificates and eventually degrees enabling them to grow in the field while realizing financial self-sufficiency. The program offers wrap-around support, emergency funding for tuition and supplies, employment readiness training, and a free laptop for individuals completing their first professional certificate.



Rachel came to the CATCH program as a single unemployed mom who was in an unstable housing situation. As she moved through the training program, Workforce Snohomish Navigators connected her with Rapid Re-Housing which stabilized her living situation and enabled her to continue her education. They also helped her to develop a resume, find a part-time job while in training, and find work as a full-time Lab Assistant at Providence Regional Medical Center after graduating.



Tony is a veteran who came to WorkSource looking for a new employment opportunity when the physical demands of his current job became too great. A former Med Tech in the Armed Forces, Tony was drawn to the possibility of building upon his skills and earning a living in the healthcare field. Tony thrived in the CATCH program, earning certificates as a Nursing Assistant and EKG Tech. He is currently working full-time as a homecare aid while he pursues his Registered Nursing degree.